

WI-FI

Initially we need to configure the wireless AP. If your kit contains Cisco RV110W please continue, otherwise please skip here for [AP GL-AR300M](#)¹.

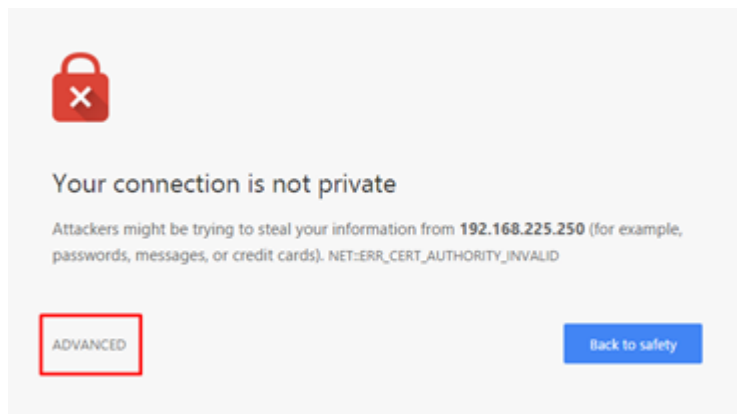


Sewio provides a [configuration file](#)² that can be simply loaded into the router. To load the file into the router follow these steps:

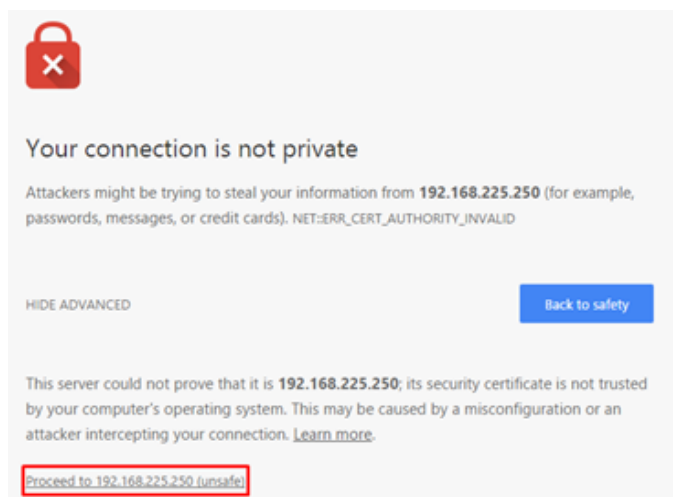
1. Plug the router to power supply and connect your computer to one of its LAN ports by using an Ethernet cable. Be sure that the Ethernet interface is set as a DHCP Client.
2. Open your web browser and type in the following IP Address: 192.168.1.1.

⚠ Note:

If you see a quote saying “Your connection is not private”, click on Advanced.



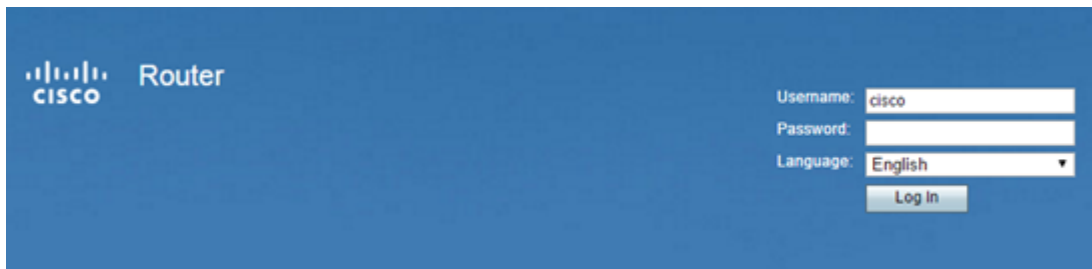
And then click on Proceed to 192.168.1.1.



¹ <https://docs.sewio.net/display/PUB/Setting+up+the+Router+GL-AR300M>

² https://sewio.sharepoint.com/:u:/s/Releases/EfN5wU-V709JnFKID_JVHwYBCx6cvJSAWKjs9opDwbz_1g?e=06L0Ot

3. After that, you should see the router's login screen.



4. The default credentials are:

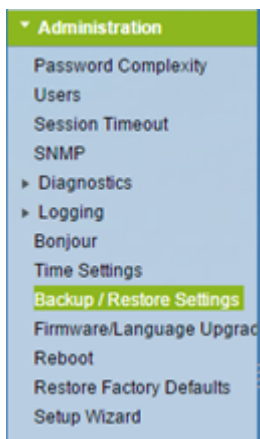
Username: cisco

Password: cisco

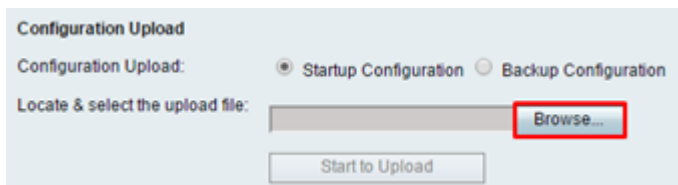
5. If you see the following screen on startup, press "Cancel".



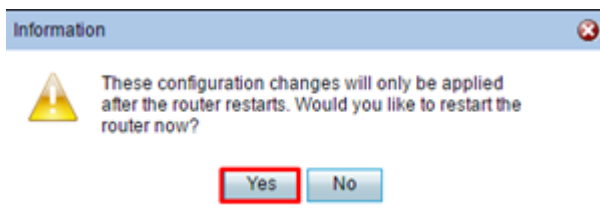
6. The router will force you to change the default password. Check the "Disable Password Strength Enforcement" checkbox (confirm with "Yes") and enter a new password, e.g. "rtlswifi".
7. Then you need to log in again with the new credentials.
8. Go to Administration -> Backup/Restore Settings.



9. Download the configuration file [here](#)³; then load by clicking “Browse...”.



10. And press “Start to Upload”.
11. The router will ask you whether you want to restart it. Select “Yes”.



12. Wait until the router reboots. If it does not redirect you automatically, type in the new IP Address: 192.168.225.1.
13. Then the router setup is complete. The new credentials are:

Username: cisco
Password: rtlswifi

Wi-Fi credentials for admin access are:

SSID: RTLS Wi-Fi
Password: rtlswifi

14. Now you can start deploying the Anchors.

³ https://sewio.sharepoint.com/:u:/s/Releases/EfN5wU-V709JnFKID_JVHwYBCx6cvJSAWKjs9opDwbz_1g?e=06L0Ot

 **Note:**

Please read [known issues related to RV110W here](#)⁴ (link is outside the RTLS UWB kit guide).

⁴ <https://docs.sewio.net/display/PUB/FAQ+-+Known+Issues>