

# Anchor Vista Omni

## Assembly Guide

### Package Content



**1x**

Anchor Vista Omni  
(w/o accessories)



**1x**

Vista Omni Cable  
Gland



**4x**

BOSSARD 2000598  
/WN 1412



**1x**

quickMOUNT  
PRO LHG

### Accessories (not included)



**1x**

Wall Mount  
Metal Bracket

# 1. Attach the Anchor to a Holder

1x Anchor Vista Omni  
(w/o accessories)



Mikrotik quickMount PRO LHG holder

Whitworth 1/4"

1x quickMOUNT PRO LHG (PN: SWC11-00-00)



4x BOSSARD 2000598 or WN 1412



1x RJ45 Feed-thru lock Connector  
(RCP-00BMMS-TLM7001)

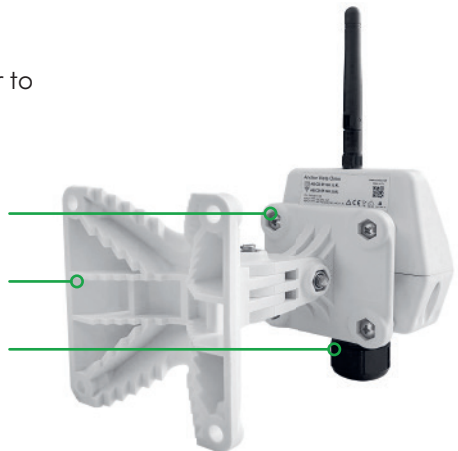


Fasten the quickMount PRO LHG holder to the anchor using the enclosed screws.

4x BOSSARD 2000598/WN 1412

quickMount PRO LHG

RJ45 Feed-thru Lock Connector



## 2. Universal Antenna Mount

Accessories recommended for the Vista Omni  
(not part of the package):

1× Universal Antenna Mount



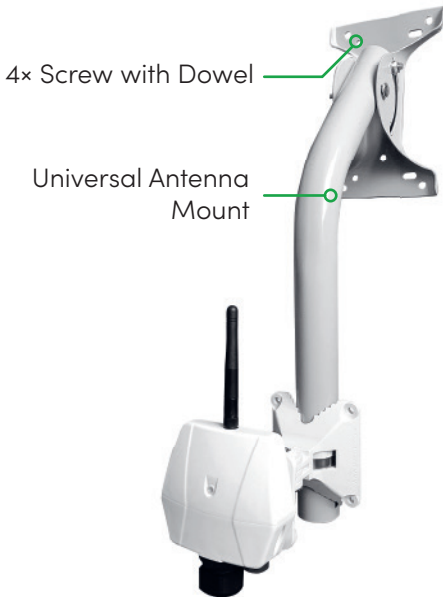
1× Steel Belt



4× Screw with Dowel for Wall Mount



Use **the universal antenna mount** together with the quickMOUNT PRO LHG holder.





**sewio.net**

email: [info@sewio.net](mailto:info@sewio.net)

phone: +420 511 205 215